

# CERTIFICATE OF LOCATION OF GOVERNMENT CORNER

County of Anoka

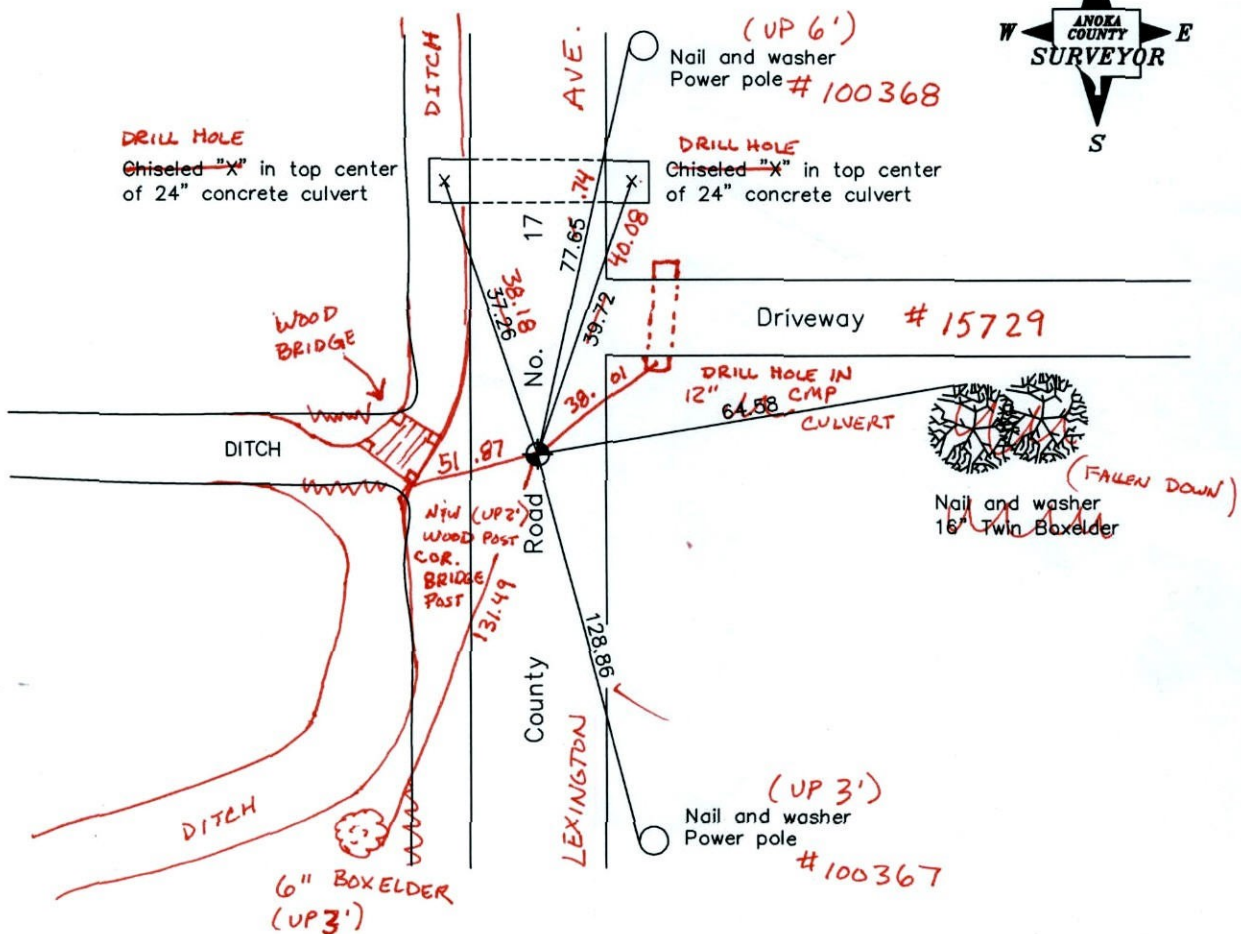
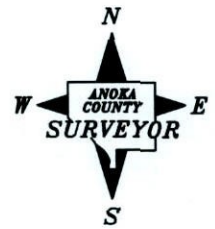
State of Minnesota

South 1/4 Corner of Sec. 13 Township 32 Range 23

I hereby certify that on the 2nd day of December, 1965, I found the described corner which was evidenced by area resurvey

and I further certify that to perpetuate the location of said corner, I did, at the exact location thereof, place a permanent marker consisting of a cast iron monument ✓

which reference or witness monuments are located in the manner following:



BK-SS  
T/T

Revised date

1/02/91
11/20/91
8/02/96
4-19-11

N.A.D. 1983 Coordinates  
(1996 adjustment)

County Project Coordinates	State Plane Coordinates
Northing <u>179936.4320</u>	Y _____
Easting <u>529440.1545</u>	X _____

Date 1/16/02

# CERTIFICATE OF LOCATION OF GOVERNMENT CORNER

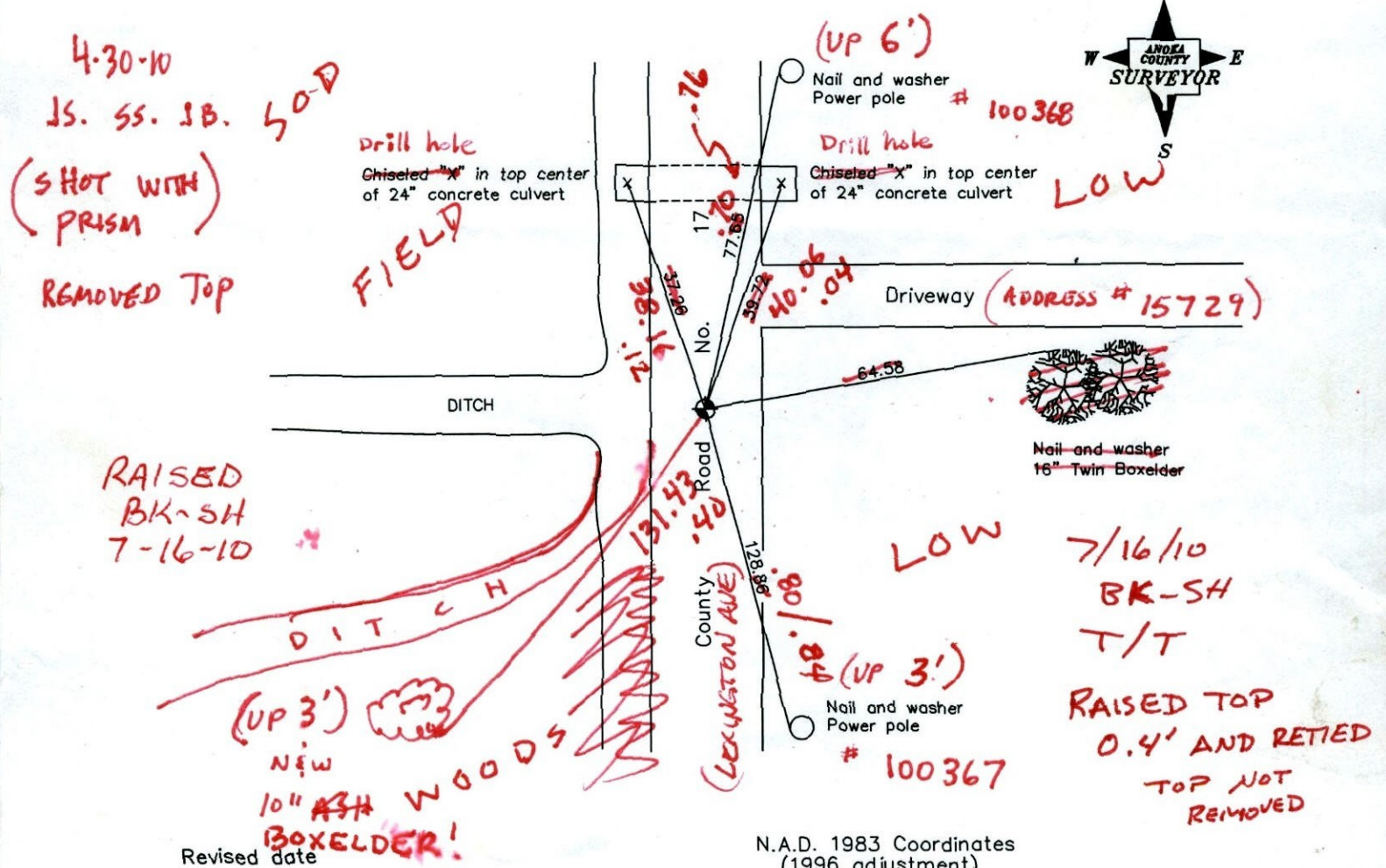
County of Anoka State of Minnesota

South 1/4 Corner of Sec. 13 Township 32 Range 23

I hereby certify that on the 2nd day of December, 1965, I found the described corner which was evidenced by area resurvey

and I further certify that to perpetuate the location of said corner, I did, at the exact location thereof, place a permanent marker consisting of a cast iron monument (FALLS ON E)

which reference or witness monuments are located in the manner following:



Revised date

1/02/91
11/20/91
8/02/96

N.A.D. 1983 Coordinates (1996 adjustment)

County Project Coordinates	State Plane Coordinates
Northing <u>179936.4320</u>	Y _____
Easting <u>529440.1545</u>	X _____

Date 1/16/02



# CERTIFICATE OF LOCATION OF GOVERNMENT CORNER

County of Anoka

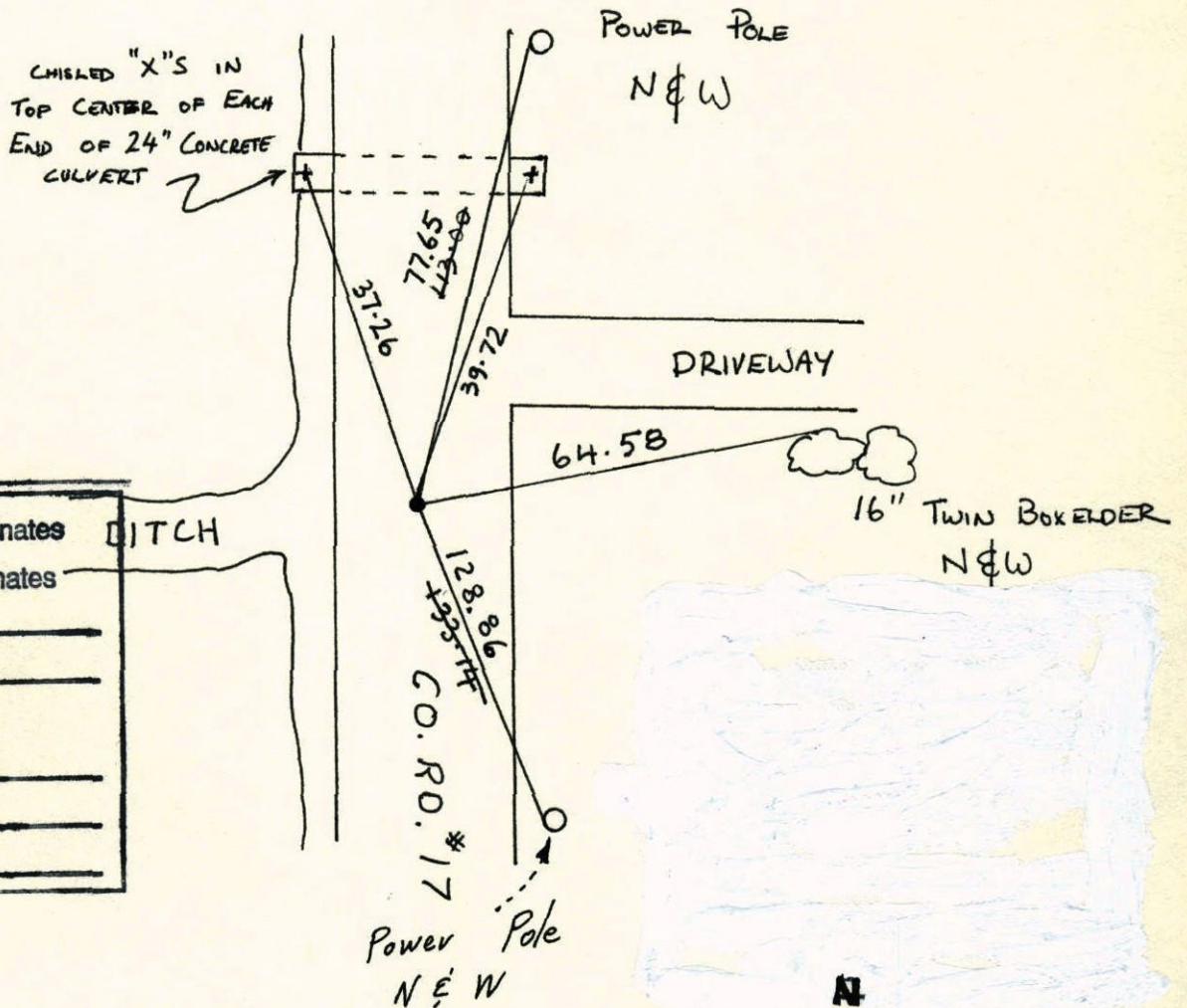
State of Minnesota

SOUTH ONE QUARTER Corner of Sec. 13 Township 32 Range 23

I hereby certify that on the 2 day of DECEMBER, 1965, I found the described corner which was evidenced by RESURVEY

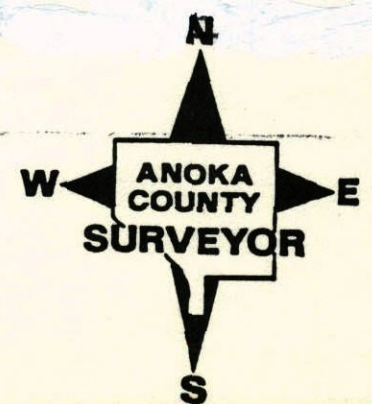
and I further certify that to perpetuate the location of said corner, I did, at the exact location thereof, place a permanent marker consisting of CAST IRON MONUMENT

which reference or witness monuments are located in the manner following:



N.A.D.	1983	Co-ordinates	DITCH
County	Project	Co-ordinates	
Northing	179936.4320		
Easting	529440.1545		
State Plane Co-ordinates			
Y	_____		
X	_____		
Date	_____		

Revised date	Revised date	Revised date
<del>1-2-91</del>		
11-20-91		
8-2-96		

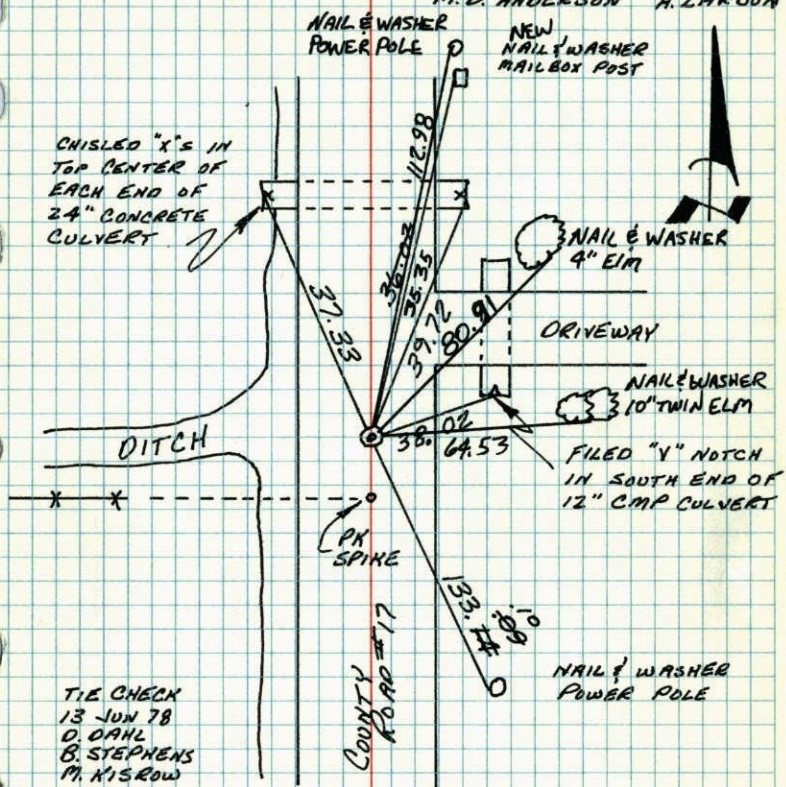




## S 1/4 CORNER SECTION 13-T32-R23

SET CAST IRON MONUMENT FROM AREA RESURVEY. PK'S  
2.00' NORTH AND EAST. ALSO PK 4.54' SOUTH.  
MONUMENT FLUSH.

2 DEC 65 J. OLIVER  
M.D. ANDERSON H. LARSON



TIE CHECK  
13 JUN 78  
D. DAHL  
B. STEPHENS  
M. KISROW

TIE CHECK  
JUNE 26, 1984  
R. BENNETT  
D. ROSS  
G. LIPS

TEMPERATURE CORRECTED  
AND HORIZONTALLY  
TAPED MEASUREMENTS

ROLAND W. ANDERSON  
COUNTY SURVEYOR  
ANOKA COUNTY, MINNESOTA

REDRAWN  
16 JAN 79  
RMG

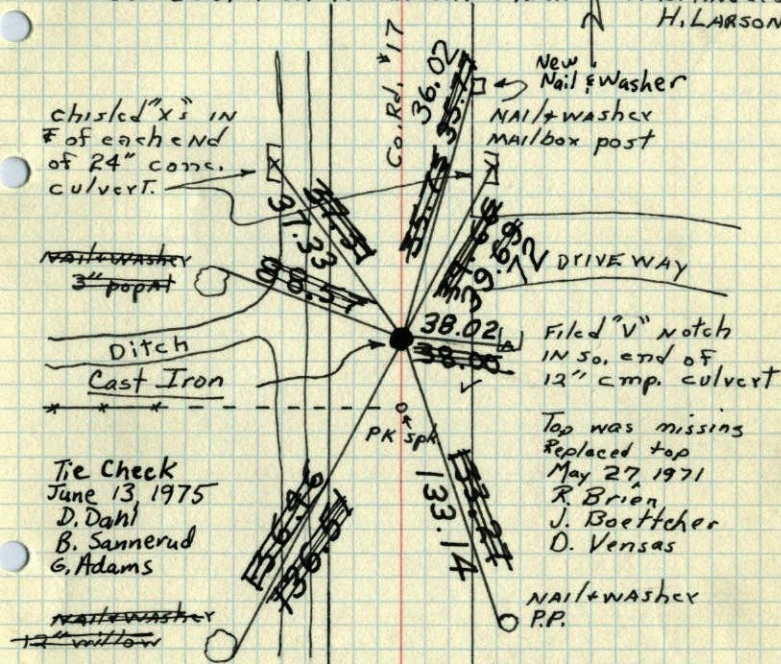
SEE NEW  
TIE BOOK 66

## S 1/4 Cor. Sec. 13 T32 R23

Set ~~PK~~ spk. From resurvey with PK  
spks. 2.00' north and east. Also ~~PK~~ PK  
spk. 4.54' so.

Set Cast Iron Monument flush

Dec. 2 1965  
J. Oliver  
M.D. ANDERSON  
H. LARSON



Tie Check  
June 13, 1975  
D. Dahl  
B. Sannerud  
G. Adams

Tie Check  
Aug. 2, 1966  
H. Larson  
D. Potter  
G. Reimer

Tie Check  
June 13, 1978  
D. Dahl  
B. Stephens  
M. Kisrow

Filed "V" notch  
in so. end of  
12" comp. culvert

Top was missing  
Replaced top  
May 27, 1971  
R. Brien  
J. Boettcher  
D. Vensas

Tie Check  
September 1, 1967  
D. Potter  
D. Powell

Monument Raised  
June 16, 1972

TEMPERATURE CORRECTED  
AND HORIZONTALLY  
TAPED MEASUREMENTS

ROLAND W. ANDERSON  
COUNTY SURVEYOR  
ANOKA COUNTY, MINNESOTA



